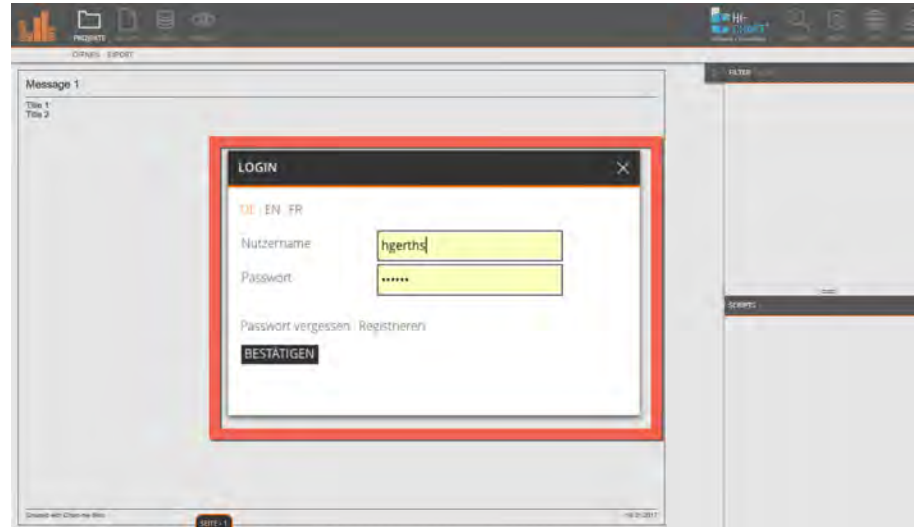


Schnellstart Chart-me WEB



1.

Einloggen



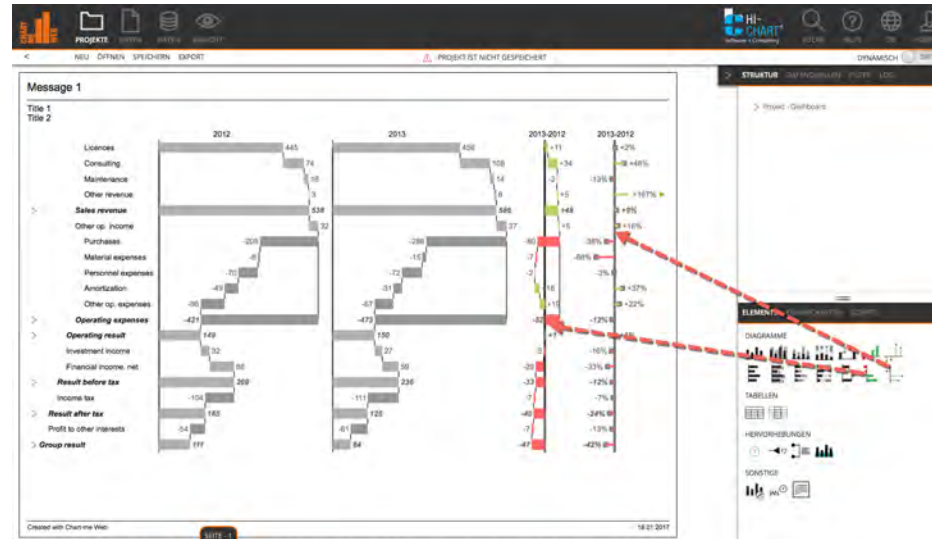
2.

Diagramm oder Tabelle einfügen



3.

Unterdiagramme ergänzen



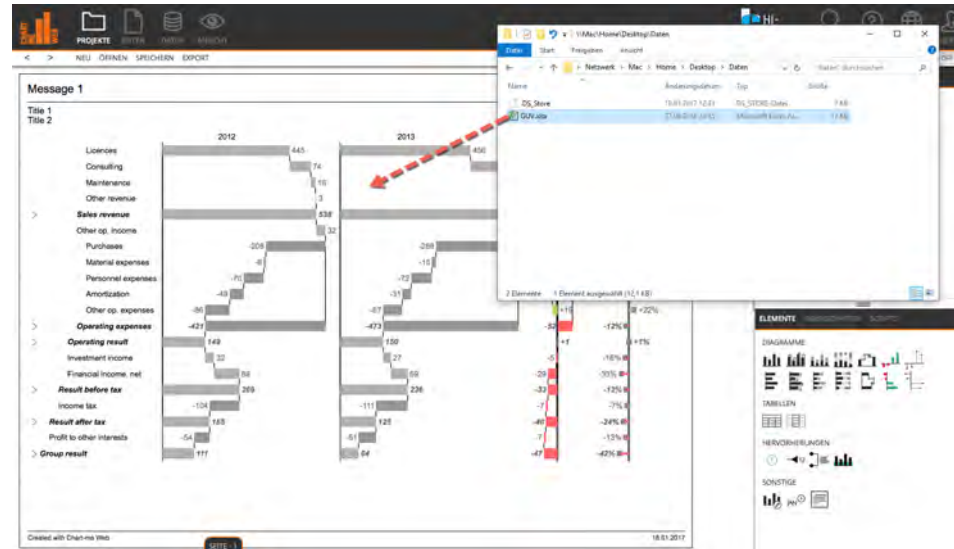
4.

Excel Daten vorbereiten

	A	B	C	D	E	F
1						
2						
3		Sales of Machinery, Energy & Transportation	*Sales and revenues	2013	2014	
4		Revenues of Financial Products	*Sales and revenues	52694	53000	
5		Sales and revenues	*Operating profit	2962	3042	
6		Cost of goods sold	*Operating costs	55656	56042	
7		Selling, general and administrative expenses	*Operating costs	-40727	-39767	
8		Research and development expenses	*Operating costs	-5547	-5697	
9		Interest expense of Financial Products	*Operating costs	-2046	-2135	
10		Other operating expenses	*Operating costs	-727	-624	
11		Operating costs	*Operating profit	-981	-1633	
12		Operating profit	*Consolidated profit before taxes	-50028	-49856	
13		Interest expense excluding Financial Products	*Consolidated profit before taxes	5628	6186	
14		Other income (expense)	*Consolidated profit before taxes	-465	-484	
15		Consolidated profit before taxes	*Profit of consolidated companies	-35	-239	
16		Provision (benefit) for income taxes	*Profit of consolidated companies	5128	5463	
17		Profit of consolidated companies	*Profit of consolidated and affiliated companies	1319	1360	
18		Equity in profit (loss) of unconsolidated affiliated companies	*Profit of consolidated and affiliated companies	6447	6843	
19		Profit of consolidated and affiliated companies	*Profit	-8	-8	
20		Less: Profit (loss) attributable to noncontrolling interests	*Profit	6441	6835	
21		Profit	*Profit	-14	-16	
22				6427	6819	
23						
24						
25						
26						
27						
28						
29						
30						
31						
32						
33						
34						
35						
36						

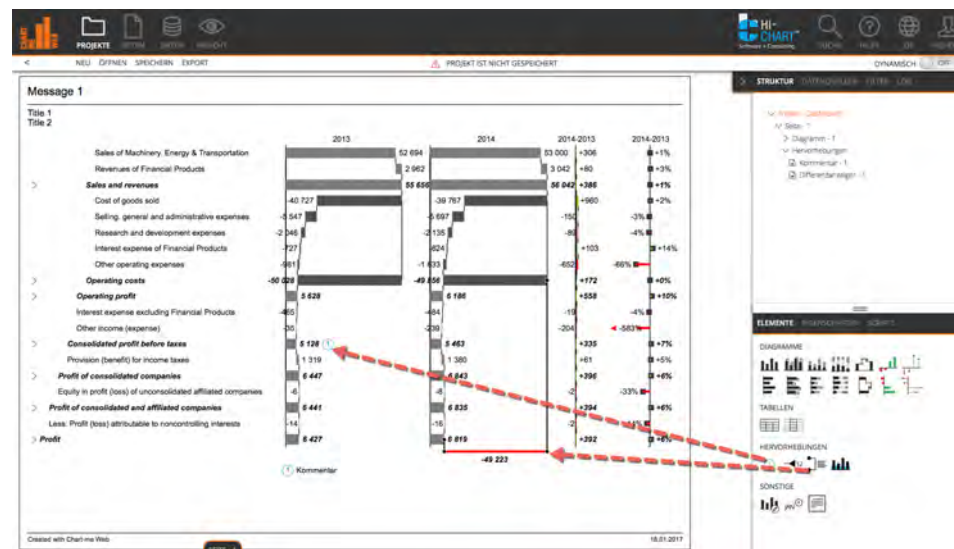
5.

Daten ins Schaubild ziehen



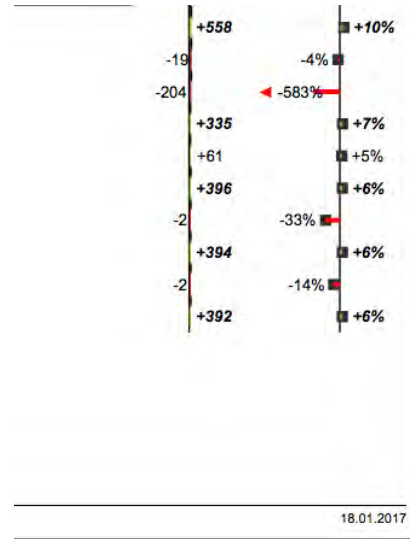
6.

Hervorhebungen anbringen



7.

Für andere Nutzer freigeben oder



ELEMENTE EIGENSCHAFTEN SCRIPTS

ALLGEMEIN STYLESHEET TEILEN EINHEITEN

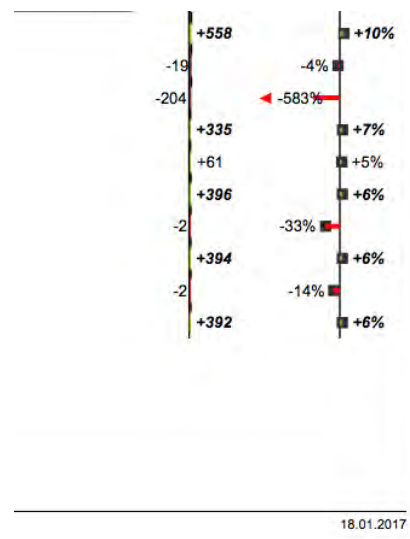
Veröffentlichen: Public with Login

Bearbeiter: Admin, Holger Gerths HI-CHART, Simone Gerths, Stefanie Schubert, Uli Seidl

Betrachter: Admin, Holger Gerths HI-CHART, Simone Gerths, Stefanie Schubert, Uli Seidl

8.

Für beliebige Nutzer per Link freigeben



ELEMENTE EIGENSCHAFTEN SCRIPTS

ALLGEMEIN STYLESHEET TEILEN EINHEITEN

Veröffentlichen: Public

Benutzer Filter: cmw20l-9w87643c74t3jgsd/jkt1o2h6nd956387465,hi-chart.com/?ProjectID=Project1484738049686

Übernehmen: ÜBERNEHMEN